

Quick Installation Guide

Windows Users



Revision: A
November, 2007

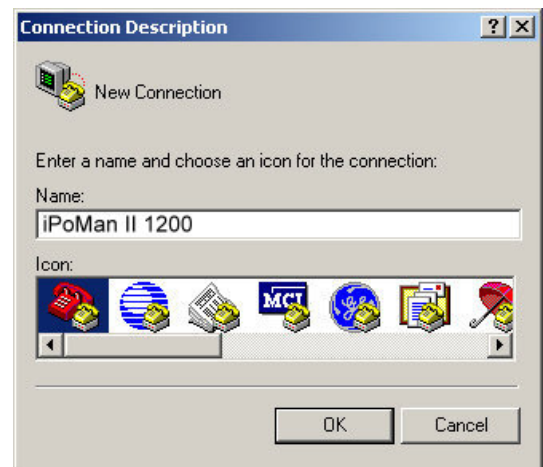
Getting Started

The following procedure describes the basic steps needed to set up the iPoMan II 1200:

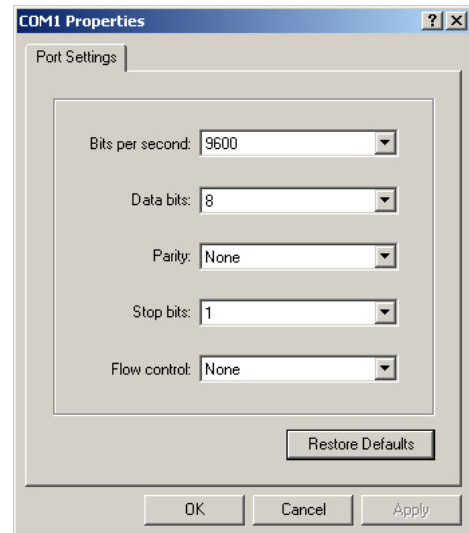
1. To set the mode of operation for the iPoMan II 1200 (S1 =off, S2= off). To set up the hardware, connect power to the power inlet and output devices to the power outlets.
2. To configure the iPoMan II 1200, you can use the console (HyperTerminal) or WAN port. Connect the iPoMan II 1200 to a console and a WAN to enable its configuration through the console or browser menu.

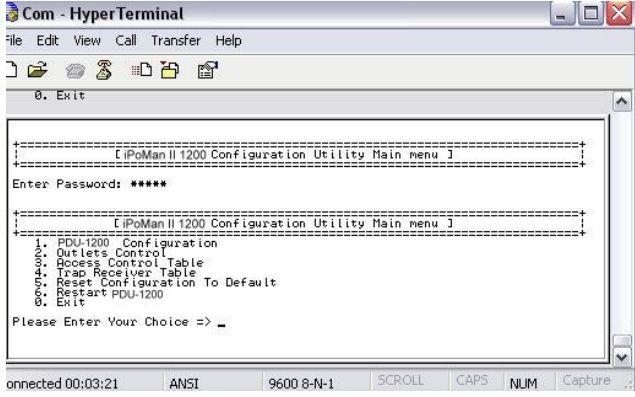
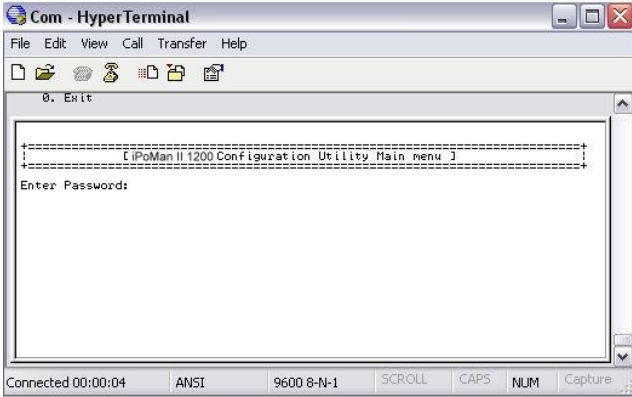


3. Follow these steps to start HyperTerminal and communicate with the iPoMan II 1200:
 1. To start HyperTerminal, click **Start, Programs, Accessories, Communications, and HyperTerminal** from the Windows Start button.
 2. A **New Connection** opens. Type a name for the connection in the **Name** field and select an icon for the connection. Click **OK** when done.
 3. From the **Connect using** drop-down box, select the **COM** port that you have connected to the iPoMan II 1200. Click **OK** when done.

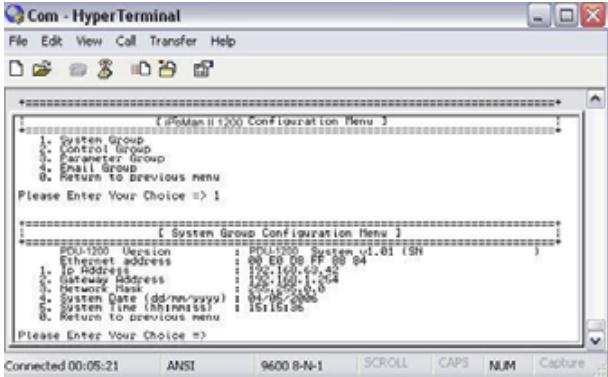


4. The **Properties** window opens. Click **Restore Defaults** to use the default settings. Make sure that the **Bits per second** field is set to 9600. Click **OK** when done.
5. Press any key. The **iPoMan II 1200 Configuration Utility Main menu** opens and you are prompted for a password. Type the default password (**admin**) and press **Enter** to continue. The main menu options are displayed.





4. Select the **System Group** submenu under the **iPoMan II 1200 Configuration** to set up the IP Address, Gateway Address, Network Mask and the System Date/Time. This IP address will be used while accessing the web interface to configure the iPoMan II 1200 parameters.

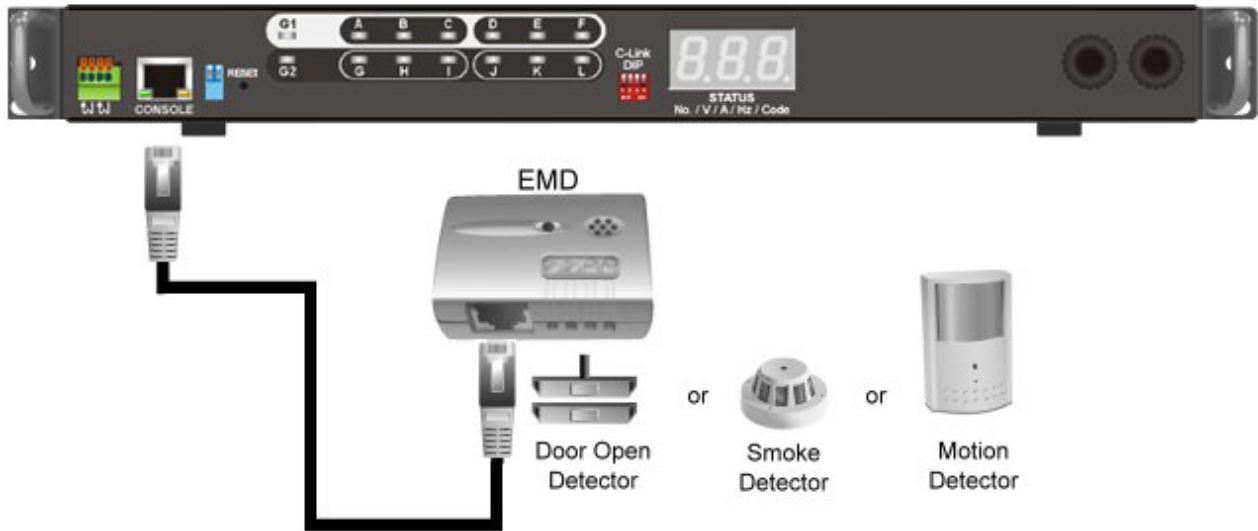


5. After connecting to WAN, open a browser from a PC in the network and use the iPoMan II 1200 IP address specified through the console menu to open the web interface for system configuration.

	Inlet		Outlet											
	G1	G2	A	B	C	D	E	F	G	H	I	J	K	L
Current (Amp)	5.92 A	12.05 A	0.01 A	0.01 A	0.01 A	0.01 A	5.92 A	0.01 A	0.01 A	6.03 A	0.01 A	0.01 A	0.01 A	5.96 A
Present Watt Hours	659.2	1351.3	0.0	0.0	0.0	0.0	644.0	0.0	0.0	648.8	0.0	0.0	0.0	644.0
Cumulative Kilo-Watt Hours	0.4	0.9	0.0	0.0	0.0	0.0	0.5	0.0	0.0	0.5	0.0	0.0	0.0	0.5
Alarm	None	None	None	None	None	None	None	None	None	None	None	None	None	None

Connecting EMD

An Environmental Monitored Device (EMD) that is connected to sensors for detecting temperature, humidity, water level, and so on can be connected to the iPoMan II 1200 with the console port. The EMD can also be connected to alarms or indicators and controlled through the iPoMan II 1200. Connect the EMD to the console port as shown:



If applicable, connect external contact closure inputs to the screw terminals on the EMD. Just like sensor detector or any device with normally-open or closed.

After connecting to EMD, open a browser from a PC in the network. The temperature and humidity status is automatically displayed on the **PDU Status** page.

	Inlet		Outlet											
	G1	G2	A	B	C	D	E	F	G	H	I	J	K	L
Current (Amps)	4.06 A	2.82 A	2.07 A	0.00 A	0.00 A	2.02 A	0.00 A	0.00 A	0.00 A	2.05 A	0.00 A	0.00 A	0.00 A	0.00 A
Present Wait Hours	475.6	333.8	191.4	0.0	0.0	187.2	0.0	0.0	0.0	193.2	0.0	0.0	77.4	0.0
Competitive Rate	0.02	0.01	0.01	0.00	0.00	0.01	0.00	0.00	0.00	0.01	0.00	0.00	0.00	0.00
Wait Hours	0.02	0.01	0.01	0.00	0.00	0.01	0.00	0.00	0.00	0.01	0.00	0.00	0.00	0.00
Alarms	None	None	None	None	None	None	None	None	None	None	None	None	None	None

EMD Device-1				
EMD Temperature (°C)	24.7°C		EMD Humidity (%)	40.2%
EMD Door 1	Disabled		EMD Door 2	Disabled